

Design and Structural Analysis of Solid Rocket Motor Casing Hardware Used in Aerospace Applications

B. Dinesh Kumar, B. Shishira Nayana, D. Shravya Shree

Abstract - Rocket motors are widely used to generate thrust or impulsive force to impart a desired velocity to flight vehicle to transport its payload to the intended destination. The working principle of Rocket motor is mainly Newton's 2nd and 3rd laws. Rocket motors are non-air breathing propulsion class i.e won't require oxygen from the atmosphere for combustion of the fuel which is stored in the rocket motor. During the operating conditions of the motor hardware, it will be subjected to high temperatures and pressure loads. Structural thermal design has to carried out for a given input parameters and analysis to be carried out to check the stress levels & temperatures on the hardware. The present paper deals with structural design of motor hardware. The main input parameters considered are the maximum operating pressure and maximum diameter of the Motor hardware. The material properties considered are upto 100°C. Structural analysis and fracture analysis are to carried out after the design of each component of the rocket motor hardware. For design, the motor hardware is considered as a pressure vessel. To compute parameters like thickness some initial assumptions were made. 2D drawing is developed using Auto Cad software and structural analysis is carried out in ANSYS. This software employs finite element analysis techniques to generate the solution. Hence the displacement magnitude, von mises stress and strain developed within the motor is pictorially visualized. Fracture analysis is also carried out on the material.

Index Terms: Ansys, Finite Element Analysis, Fracture Analysis, Motor Casing, Solid Rocket Motor, Stress, Strains, Structural Analysis.

1. INTRODUCTION

Rocket motors are non-air breathing propulsion class i.e won't require oxygen from the atmosphere for combustion of the fuel which is stored in the rocket motor [1]. A rocket motor is a typical energy transfer system. The chemical energy inside the fuel is converted to the thermal energy by a combustion process. High pressure and high temperature combustion product gases are expanded through a converging-diverging nozzle. By this process "internal energy of the gas is converted into kinetic energy of the exhaust flow and the thrust is produced by the gas pressure on the surfaces exposed to the gas" [2].

Solid propellant rocket motor is the most commonly used compared to other rocket motors due to its relatively simple design, high reliability, ease of manufacture and ready to use on demand etc. Since solid-fuel rockets can remain in storage for long periods, and then reliably launch on short

notice, they have been frequently used in military applications such as missiles. Solids are, however, frequently used as strap-on boosters to increase payload capacity or as spin-stabilized add-on upper stages when higher-than-normal velocities are required. Solid Rocket Motor can be used for a wide variety of applications requiring wide range of magnitude of thrust [3]. The design and the construction of the solid rocket motor hardware involve consideration of various stresses acting on the motor hardware due to pressure & thermal loads. For this analysis to be done, selection of material and their properties, motor hardware performance and operating conditions, a few design considerations, etc., are the parameters required to be studied to obtain the solution.

2. Literature Review

Solid rockets were invented by the Chinese, the earliest versions were recorded in the 13th century. Hyder Ali, king of Mysore, developed war rockets with an important change: the use of metal cylinders to contain the combustion powder [4]. Rocket propulsion system is a non-air breathing system, in which the propulsive effort or thrust is obtained by variation of the momentum of the system itself. They do not depend on the atmospheric air, either as oxidizer. As its name implies, the propellant of the motor is in the solid state. The oxidizer and the fuel is premixed and is contained and stored directly in the combustion chamber [5]. Since the solid propellant both includes fuel and oxidizer, solid propellant rocket motors can operate in all environmental conditions. In comparison to other types of rockets, solid propellant rocket motors have simple design, are easy to apply and require little or no maintenance. Rocket motor propulsion can be classified based on the type of propellant of rocket propulsion units used in a given vehicle and type of construction, the number by the method of producing thrust. Even though there are many rocket propulsion types only chemical rocket propulsion is widely used [6]. Other rocket propulsions have their drawbacks in the weight consideration and thrust produced. Further advancements in technologies may lead to usage of other rocket propulsion systems in future.

3. Main Parts of Solid Propellant Rocket Motors

A simple solid rocket motor consists of a Motor casing, Nozzle, propellant grain and igniter.

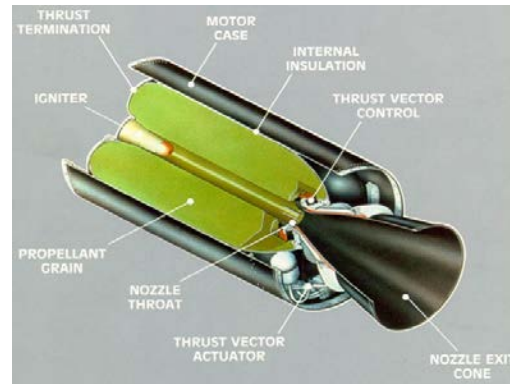


Fig1 : Solid Rocket Propellant Motor

3.1 Motor Case:

The combustion takes place in the motor case; therefore, sometimes it is referred to as combustion chamber. The case must be capable of withstanding the internal pressure resulting from the motor operation, approximately 3-30 MPa, with a sufficient safety factor. Therefore motor case is usually made either from metal (high-resistance steels or high strength aluminum alloys) or from composite materials (Glass, Kevlar and Carbon).

3.2 Insulation:

High temperature of the combustion gases, ranging from approximately 2000 to 3500 K, requires the protection of the motor case or other structural subcomponents of the rocket motor. Typical insulator materials have low thermal conductivity, high heat capacity and usually they are capable of ablative cooling. Most commonly used insulation materials are EPDM (Ethylene Propylene Diene Monomer) with addition of reinforcing materials.

3.3 Igniter:

The ignition system gives the energy to the propellant surface necessary to initiate combustion. Ignition usually starts with an electrical signal. The ignition charge have a high specific energy, they are designed to release either gases or solid particles. Conventional heat releasing compounds are usually pyrotechnic materials, black powder, metal-oxidant

formulations and conventional solid rocket propellant.

3.4 Nozzle:

High temperature, high pressure combustion gases are discharged through the converging-diverging nozzle. By this way, chemical energy of the propellant is converted to kinetic energy and thrust is obtained. The geometry of the nozzle directly determines how much of the total energy is converted to kinetic energy. Therefore nozzle design has a very important role on the performance of a rocket motor.

The grain behaves like a solid mass, burning in a predictable fashion and producing exhaust gases. The nozzle dimensions are calculated to maintain a design chamber pressure, while producing thrust from the exhaust gases. Once ignited, a simple solid rocket motor cannot be shut off, because it contains all the ingredients necessary for combustion within the chamber in which they are burned. More advanced solid rocket motors can not only be throttled but also be extinguished and then re-ignited by controlling the nozzle geometry or through the use of vent ports.

4. SOLID ROCKET MOTOR HARDWARE DESIGN

4.1 DESIGN INPUTS:

Maximum Expected Operating Pressure (MEOP) considered is 150 ksc which normally can be obtained from the ballistic design. The motor maximum diameter considered is 200 mm. Motor hardware design is carried out using pressure vessel code.

Solid rocket motor or pressure vessel consists of the following components

- i) Cylindrical Motor casing
- ii) Head end & nozzle end domes
- iii) Head end & nozzle end flange
- iv) Convergent/divergent nozzle
- v) Head end cover
- vi) Bolted Joint between motor- nozzle & motor – head end cover

4.2 MATERIAL SELECTION CRITERIA:

Maraging Steel -250 grade (MDN-250) is chosen to minimize the hardware weight due to its high specific strength. Moreover, it is easily available and fabrication technology is well established. This material has been widely being used in space and defense programs.

The detailed data on the chemical composition and mechanical properties are as given below.

4.2.1 Chemical Composition (Wt. %):

C :	0.03	Max.
Mn :	0.1	Max.
Si :	0.1	Max.
Ni :	17	-19
Mo :	4.6	-5.2
Co :	7	-8.5
Ti :	0.3	-0.5

4.2.2 Mechanical Properties of maraging steel:

UTS (MPa)	:	1750 MPa
Y.S (MPa)	:	1680 MPa
Elongation (%)	:	15
K _{IC} fracture toughness	:	80 MPa-m ^{1/2}
Young's modulus:		210 GPa

4.2.3 Factor Of Safety Selection Criteria:

As per AVP -32 and MIL standards, the following safety factors have been chosen.

On Ultimate tensile Strength (UTS): 1.5

On Yield Strength : 1.33

Allowable Ultimate tensile stress: $175/1.5 = 116.6$ kgf/mm²

Allowable Yield stress : 126 kgf/mm²

Lowest of above two allowable stresses is on UTS (116.6 N/mm²) is taken for design.

4.3 DESIGN INPUTS:

In brief, The following inputs have been taken for motors hardware design.

- i) Material= Maraging steel (250 grade)
- ii) Motor outer diameter (D) = 200 mm
- iii) MEOP (P) = 150 kgf/cm²

iv)UTS	=	175kgf/mm ²
v) Yield strength	=	168kgf/mm ²
vi) Factor of safety (F.S)	=	1.5 on UTS
vii) Weld efficiency (E)	=	90%
viii) Biaxial gain	=	1.1(10%)
vii) Mismatch factor	=	1.15 (5%)

5. DESIGN CALCULATIONS:

5.1 Thickness of Motor casing:

The cylindrical shell thickness is calculated by using conventional formula from ASME Pressure vessel code. It is given by

$$t = \frac{P * D * Mismatch\ Factor}{biaxial\ gain * 2 * (SE - 0.6P)}$$

The Cylindrical shell is assumed to be made from the sheet which is rolled & weld method. In this case, both mismatch factor and weld efficiency (E) have to be considered.

Allowable strength(S)	:	UTS/F.S
Calculated thickness (t)	:	1.506 mm

5.2 Head end & Nozzle end Dome :

Various dome shapes viz. ellipsoidal, hemispherical, tori spherical etc are used in pressure vessel. The shape of the dome considered is Tori-spherical type because of easy fabrication compared to other shapes. This is assumed to be fabricated from the forged rod of 200 mm diameter. After iterations, the following parameters are chosen to get optimum parameters

Crown Radius (L)	=	150 mm
Knuckle radius (r)	=	15% of 'L' = 22.5 mm
L/r	=	6.6 mm
M	=	0.25*(3+√(L/r)) = 1.39

$$t = \frac{P * L * M}{2.0 * (SE - 0.1P)}$$

Thickness (t)	=	1.347 mm
---------------	---	----------

5.3 Head End Flange Design & bolted joint between motor –head end cover

Schneider's approach is used to calculate the flange thickness and to finalize the size and number of bolts. 12.9 grade Socket head bolts are considered for design.

Head end opening diameter:	333mm
MEOP	: 1.5 kg/mm ²
Factor of safety considered :	1.5
No. of studs assumed	: 24 No.s
Bolt size & class :	M6 x 1.0, 12.9 class

$$N = \text{No. of bolts/mm of stud circle circumference} = 24/468.1 = 0.0512$$

$$\text{Circumferential pitch (d)} = \pi \times 149 / (24 \times 10) = 2.43$$

A = Minimum required area/bolt

$$A = \frac{P R_m^2 (1.0 + l/b_{\max})}{2.0 * \sigma_{\text{bolt}} * N (R_m + l)} = 35.9 \text{ mm}^2$$

Where

$$\sigma_{\text{bolt}} = \text{yield strength of the bolt} = 108 \text{ kg/mm}^2$$

M6 x 1.0 bolt having cross sectional area 36.6 mm²

Thickness of flange can be calculated by

$$t = 1.1 R_m \left[\frac{3.0 * P * l}{\sigma_f (1 - N * d) (R_m + l)} \right]^{0.5}$$

$$t = 7.22 \text{ mm}$$

Thickness chosen : 8.0 mm;

5.4 Max. Stress on each bolt due to pressure load and preload:-

$$\text{Stress due to pre load on each bolt} = 0.4 \sigma_{\text{yield_bolt}} = 36.0 \text{ kg/mm}^2$$

$$\text{Stress due to pressure load on each bolt} = 11.3 \text{ kg/mm}^2$$

$$\text{Total stress on each bolt} = 36.0 + 11.3 = 47.3 \text{ kg/mm}^2$$

Factor of safety available on each bolt : 1.90 on yield strength

5.5 Head end cover

Head end cover thickness can be same as flange but it is a flat plate, the thickness has to be calculated by using flat plate closure with bolted joint formula and higher one has to be finalized. Flat plate with bolted joint formula given in pressure vessel code is

$$t = d \sqrt{\frac{CP}{SE} + \frac{1.9whg}{SEd^3}}$$

Where d = Diameter up to the centre of 'O' ring
= 156 mm

$C = 0.3$

$P = 1.5 \text{ kgf/mm}^2$

$E = 1$

$W = \pi/4 d^2 p = 35668 \text{ kgf}$

$h_g = 10.5 \text{ mm}$

$$t = 80 \sqrt{\frac{0.3 * 1.5 * 2.0}{175 * 1.0} + \frac{1.9 * 7540 * 6.0 * 2.0}{175 * 1.0 * (80)^3}} t$$

= 11.09 mm

5.6 Nozzle End Flange Design & bolted joint between motor – nozzle

Schneider's approach is used to calculate the flange thickness and to finalize the size and number of bolts 12.9 grade Socket head bolts are considered for design.

Head end opening diameter : 667 mm

MEOP : 1.5 kg/mm²

Factor of safety considered : 1.5

No. of studs assumed : 24 No.s

Bolt size & class : M6 x 1.0, 12.9 class

N = No. of bolts/mm of stud circle circumference
= $24/468.1 = 0.0512$

Circumferential pitch (d) = $\pi \times 149 / (24 \times 10) = 2.43$

A = Minimum required area/bolt

$$A = \frac{P R_m^2 (1.0 + l / b_{\max})}{2.0 * \sigma_{\text{bolt}} * N (R_m + l)} = 35.9 \text{ mm}^2$$

Where

σ_{bolt} = yield strength of the bolt = 108 kg/mm²

M6 x 1.0 bolt having cross sectional area 36.6 mm²

Thickness of flange can be calculated by

$$t = 1.1 R_m \left[\frac{3.0 * P * l}{\sigma_f (1 - N * d) (R_m + l)} \right]^{0.5}$$

$t = 7.22 \text{ mm}$

Thickness chosen : 8.0 mm;

5.7 Max. Stress on each bolt due to pressure load and preload:-

Stress due to pre load on each bolt = $0.4 \sigma_{\text{yield_bolt}}$
= 36.0 kg/mm²

Stress due to pressure load on each bolt = 11.3 kg/mm²

Total stress on each bolt = 36.0 + 11.3 = 47.3 kg/mm²

Factor of safety available on each bolt : 1.90 on yield strength

5.8 NOZZLE DESIGN:

Nozzle is a convergent – divergent conical nozzle. It is designed with an area ratio of 9. This is planned to fabricate from the forged rod of 200mm diameter.

Nozzle throat diameter : 35 mm

Nozzle exit diameter : 105mm

Convergent diameter : 200mm

Area of the divergent ratio : 9

5.8.1 Nozzle Convergent Thickness:

Convergent thickness is designed by using conical shell formula

$$t = \frac{P * d}{2 \cos \alpha ((UTS/F.S) * \eta_{\text{weld}} - 0.6P)}$$

α = half of the included angle of the cone = 55°
By formula thickness (t) : 1.511 mm

5.8.2 Nozzle Throat Metal Backup Thickness:

The pressure at nozzle throat section will be approximately 0.54 P_c . Therefore, at the throat metal back up

$P_t = 0.54 P_c$

$$t = \frac{P * d}{2((UTS/F.S) * \eta_{\text{weld}} - 0.6P)}$$

Where

Throat back up diameter : 35 mm

Pressure at throat : 81 ksc

Thickness by formula : 0.32 mm

Thickness chosen : 1.0 mm (from fabrication point of view)

5.8.3 Nozzle Divergent Thickness

Nozzle divergent thickness is with conical shell formula

$$t = \frac{P * d}{2 \cos \alpha \cos \alpha (/F.S) * \eta_{\text{weld}} - 0.6P}$$

α = half of the included angle of the cone = 14 °

Thickness obtained is 0.7 mm. The thickness obtained is very small; however from the manufacturing point of view a minimum thickness of 1.0 mm is selected.



Fig 5.8.3.1: 2-dSection of the Solid Rocket Motor

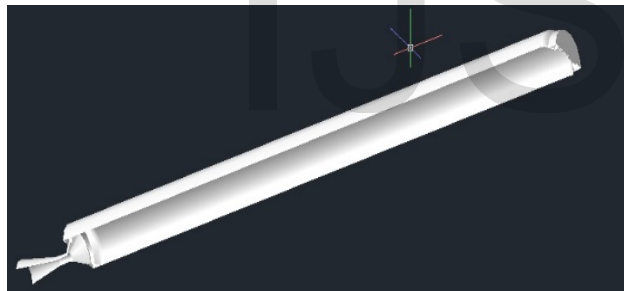


Fig 5.8.3.2:3-d cut section Section of the Solid Rocket Motor

6. STRUCTURAL ANALYSIS OF SOLID ROCKET MOTOR HARDWARE

The operating maximum internal pressure of motor is 150 ksc. Finite Element analysis of above motor is done for internal pressure.

6.1 Material Properties:

Following material properties are considered in this analysis

Material : Maraging steel (MDN-250)

UTS : 175Kgf/mm²

YS : 168Kgf/mm²

E : 19000 Kg/mm²

ν : 0.3

6.1.1 Weld Zone properties:

Weld efficiency : 90 %

UTS : 120 Kg/mm²

YS : 108 Kg/mm²

6.1.2 Allowable stress:

Factor of safety on UTS is 1.5 and factor of safety on YS is 1.33

σ_{all} = minimum of ($\sigma_{uts}/1.5, \sigma_{y.s}/1.3$)

= min (116.6, 126.3)

In Parent material = 116.6 Kg/mm²

In weld zone = 80 Kg/mm²

7. STRESS ANALYSIS OF MOTOR CASING

Axisymmetric Finite Element model of motor casing is prepared by using 8-nodded axisymmetric element, (plane 183). Stress analysis of model is carried out for internal pressure of 150KSc by fixing upper bulkhead portion. FE model with boundary condition is shown in figure. Stresses at different location are given in table and locations are shown in figure. Stress pattern is shown in figure.

Flange joint is modeled by arresting relative nodal displacement in appropriate direction. This will not give accurate result for bolt stresses, but our aim is to find out the stresses in casing only and this model will fulfill our requirements.

Table 7.1 Stresses at different locations

Location	Von misses	F.S on UTS
A	44.77	1.95
B	94.23	0.93
C	132.77	0.66
D	80.32	1.1
E	77.73	1.13

F	164.87	1.13
G	121.3	0.72
H	78.12	1.12

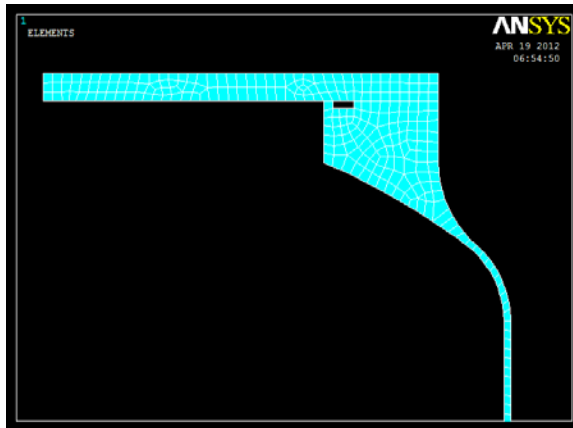


Fig 7.1: Showing the Elements of the Motor Model

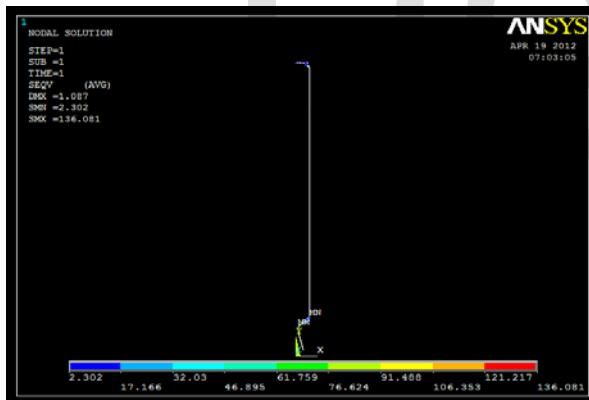


Fig 7.2: Nodal Solution of the total model

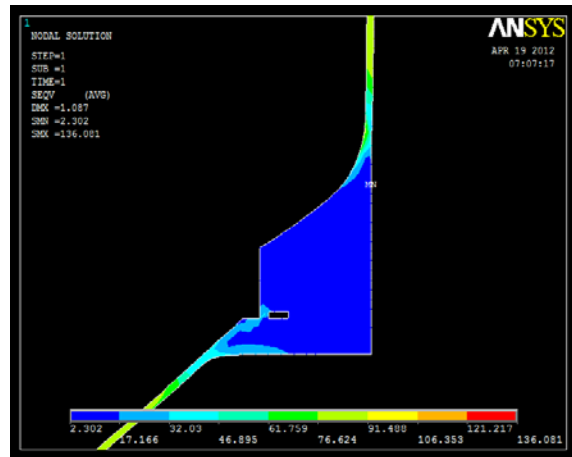


Fig 7.3: Nodal Solution of the Nozzle end side of model

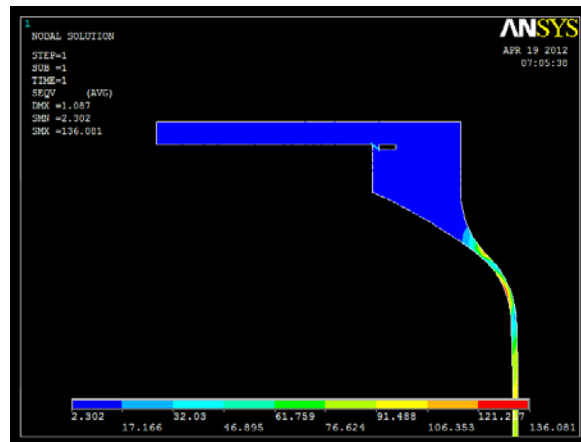


Fig 7.4: Deformation of the material at Nozzle end side

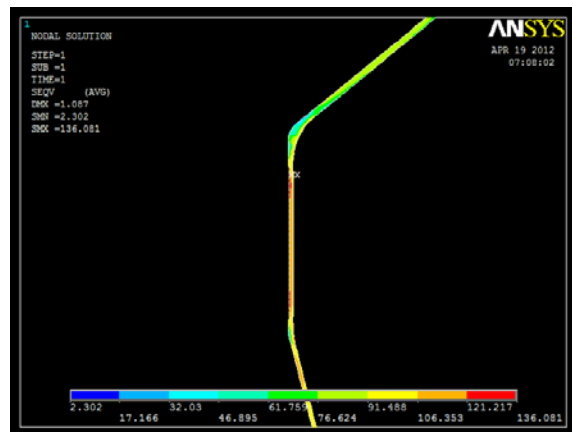


Fig 7.5: Deformation of the material at Nozzle Throat

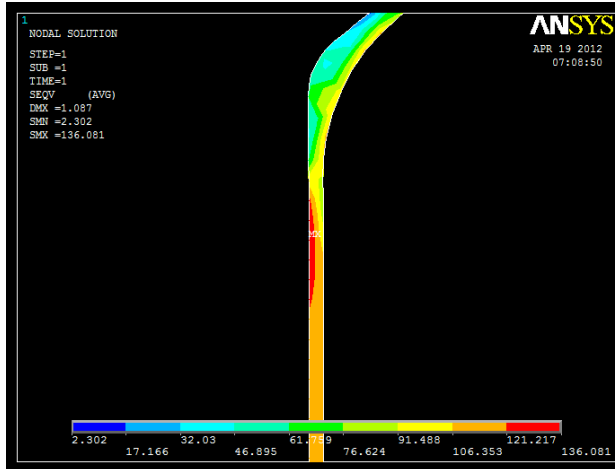


Fig 7.6: Deformation along thickness of the casing

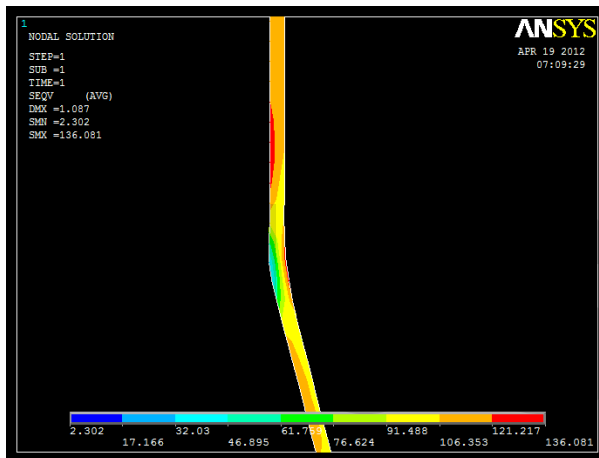


Fig 7.7: Deformation along Head end of the casing

8. FRACTURE ANALYSIS OF MOTOR CASE

The traditional design approach of rocket motor case is generally based on thin shell theory wherein the ultimate or yield strength of the material enters the design along with the chosen safety factors. However, it is well known that the strength-based design carries with it an inherent assumption that the material is free from flaws and perfect fabrication [7]. But in practice, the material may contain voids, cracks or some induced cracks in weldment and during weld repair process. These flaws can act on sites for crack initiation under certain conditions of

operation and leads to catastrophic failure of the motor case.

Fracture analysis makes it possible to determine the critical crack size dimensions in selected motor case thickness for known fracture toughness of the material, which leads to failure. Based on analysis, the designer can specify the critical flaw sizes to take care in the raw material and inspection stage and selection of the material based on its fracture toughness value. For the present analysis, the following design inputs have been considered.

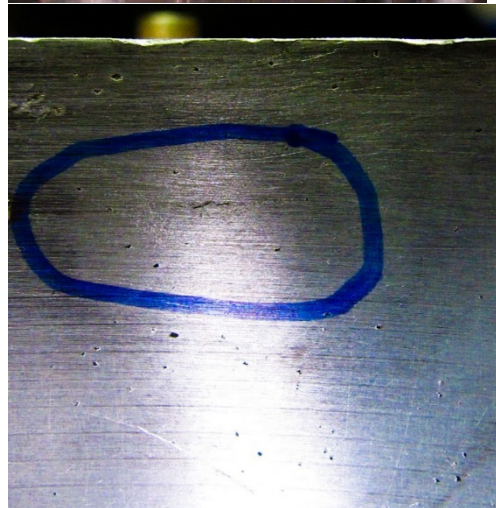


Fig 8.1: Showing the Fracture Model of SRM

8.1 DESIGN INPUTS:

Material : Maraging steel-250 grade
 Yield strength of the material (σ_{ys}): 168 kgf/mm²
 Plane strain fracture toughness on parent metal (K_{IC}): 90 MPa√m
 Plane strain fracture toughness on weldment (K_{IC}) = 75MPa√m = 241.5 kg/mm^{3/2}
 Plane stress fracture toughness on parent metal (K_C): 120-140MPa√m
 The thickness of the motor case hardware (t) : 1.5 mm.
 MEOP(P) : 150 ksc
 Motor outer diameter(D): 200 mm

The state of stress exists in thin shells is plane stress condition, whereas in thick shells it is a plane strain condition. The minimum thickness to achieve the plane strain conditions is given by

$$t = 2.5 \left(\frac{K_{IC}}{\sigma_{YS}} \right)^2 = 8.1 \text{ mm}$$

The present motor case thickness is 1.5 mm. So, the plane stress fracture toughness (K_{c-max}) is relevant rather than the plane-strain fracture toughness. However, the plain strain condition is considered for this analysis due to the following reasons.

- i) The plain strain fracture toughness (K_{IC}) is a material property like UTS, yield strength etc. and it is independent of thickness of material and flaw geometry for high strength materials. Whereas
- ii) The plane stress fracture toughness (K_C) is not independent of material property but it depends on thickness of material, flaw geometry and its dimensions.
- iii) " K_{IC} " of the given material will be lower than " K_C ". Consideration of K_{IC} for design is more conservative and the number of allowable crack sizes also can be reduced. The present motor case is having number of weld joints. The welded motor

case fracture toughness will be lower than parent metal fracture toughness.

Hence, the plane strain fracture toughness of weldment of 75 MPa√m (assumed) is taken for analysis. The next assumption is that the flaw present is in such an orientation that it would tend to open up under the tangential stress. Elliptical surface flaws have been considered, as they tend to propagate at a faster rate than the embedded flaws. The stress intensity factor is more in elliptical surface flaws.

The general relation among K_{IC} , applied membrane stress (σ) and flaw size (a) for elliptical surface flaws is given by

$$K_I = 1.12 M_K \sigma \sqrt{\frac{a\pi}{Q}}$$

Where

K_I = Stress intensity for a given flaw size and stress ratio (σ/σ_{ys})

Q = Flaw shape parameter which is a function

$$Q = \left[\phi^2 - 0.212 \left(\frac{\sigma}{\sigma_{YS}} \right)^2 \right]$$

flaw aspect ratio (a/2c) and stress ratio

ϕ = elliptical integral of the second kind which is given by

$$\phi = \int_0^{\pi/2} \left[1 - \left(\frac{c^2 - a^2}{c^2} \right) \sin^2 \theta \right]^{1/2} d\theta$$

$$M_K = 1.0 + 1.2 \left(\frac{a}{t} - 0.5 \right)$$

M_k = Back correction factor based on flaws depth to thickness ratio

Constant 1.12 = Front free surface correction factor, this value equal to 1.0 for embedded cracks.

σ = Operating stress (hoop stress in the present case)

a = Crack depth(half of minor axis of ellipse)

c = Semi-crack length(semimajor axis of ellipse)

Any meaningful fracture analysis is possible when industry data on minimum detectable flaw size with a specified degree of reliability and confidence levels is available. The minimum detectable flaw size invariably has to be validated at shop floor level and is a function of many factors viz, material properties, thickness in question, NDT methods used vis-à-vis state of art, NDT inspector's skill etc. For the sake of present analysis a set of flaw sizes have been assumed based on past industry experience on maraging steel plates and forgings.

8.2 Analysis:

Hoop stress due to internal pressure(σ)=
 $PD/2t=(1.5*178)/(2.0*1.5)=100 \text{ kg/mm}^2$

Stress ratio(σ/σ_{YS}) = 0.69

8.3 Comments:

Fracture analysis has been carried out for different flaw depths ranging from 0.5 mm to 1.2 mm and flaw length of 2 mm to 5 mm. It is seen from the results that up to crack depth of 1.2 mm and crack width of 2.5 mm for all the cases, the stress intensity levels are within limits and the factor of safety available is fairly good.

From the crack depth 1.5 and crack width 3, the flaws detected are **critical** where stress intensity levels are high and FOS is not satisfied. However, these critical cracks can be detected through F_notch & G_notch NDT methods.

9. RESULTS & DISCUSSION

On observing all the results we got from ANSYS it is clear that the design can withstand the stresses produced because of the pressure of 150Kg-f/cm². Since the stresses developed are lower than the UTS of the material i.e. 175Kg-f/mm² = 1716.164N/mm² and the factor of safety FOS obtained higher than the design FOS value. The deformations of the casing are also known and plotted in the analysis portion. The maximum deformation occurred in the casing is at divergent portion of the nozzle and its value is 1.087mm.

We have also found the various allowable crack lengths which can be withstand by casing and also the critical crack lengths which cannot be withstand by the material. By knowing these critical crack lengths we can estimate the allowable crack lengths in imperfections during the manufacturing process.

10. CONCLUSION

After structural analysis of the Rocket motor casing it is clear that the stress developed at various locations of the casing are within allowable limit and a factor of safety of (FOS) 1.5 is obtained by designing the casing using ASME codes.

The deformation of the casing is also known using ANSYS and the maximum deformation value is given by 1.08mm. And the maximum deformation occurred is located at the end portion of the divergent section of the nozzle.

It is seen that all crack sizes (and aspect ratios) considered, the corresponding critical crack sizes are well above the NDT detectable methods. The thickness of 1.5 mm motor casing with less than critical crack sizes will not affect based on fracture.

REFERENCES

1. Sutton, G. P. and Biblarz, O., Rocket Propulsion Elements, 7th ed., John Wiley and Sons, New York, 2001

2. Sidhant Singh (2013), Solid Rocket Motor for Experimental Sounding Rockets, *Advances in Aerospace Science and Applications*. Volume 3, Number 3, pp. 199-208
3. NASA SP-8025, "Solid rocket motor metal cases", April 1970(N72-18785).
4. ASME (American Society of Mechanical Engineers) codes Section VIII Div. 1 2004 Edition.
5. Dennis Moss, "Pressure Vessel Design Manual", Third edition, Gulf professional publishing, Burlington, USA.
6. Davanas, G.E. Jensen and D. W. Netzer (Eds), "Solid rocket motor design" chapter 4 of tactical missile propulsion vol. 170, progress in aeronautics and astronautics, AIAA, 1996. pp 323-379
7. Beena, A. P., Sundaresan, M. K., and Nageswara Rao, B. 1995. Destructive tests of 15CDV6 steel rocket motor cases and their application to lightweight design. *Int. J. of Pressure Vessel and Piping*. 313-320.

IJSER